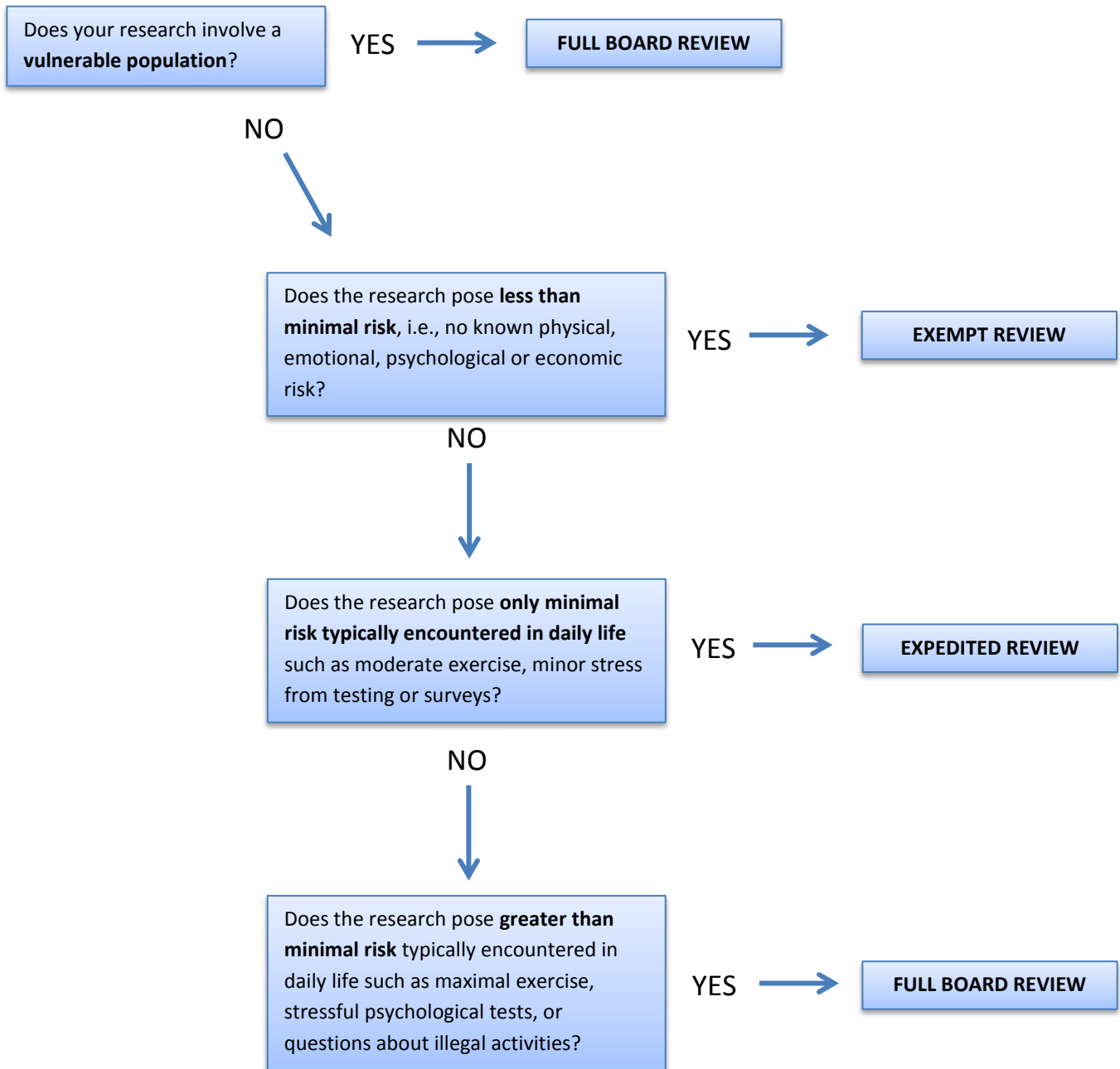


DETERMINING IRB REVIEW CATEGORY

This decision tree should be used to determine the necessary level of review by the Institutional Review Board. If you are unsure or have questions regarding the submission of your study, please contact the IRB Chair.



Minimal risk means that the probability and magnitude of harm or discomfort anticipated in the research are not greater in and of themselves than those ordinarily encountered in daily life or during the performance of routine physical or psychological examinations or tests. *Code 45 CFR 46.102(i)*

Vulnerable populations include children, prisoners, pregnant women, handicapped or mentally disabled persons, economically or educationally disadvantaged persons among other populations subject to coercion.